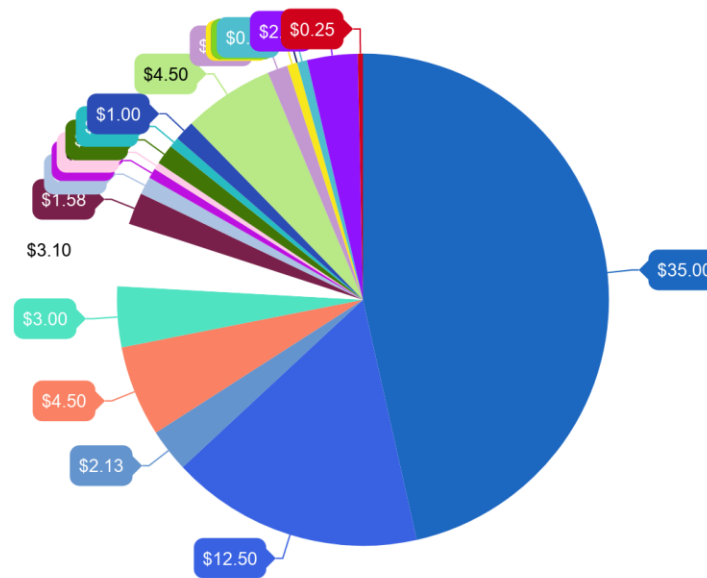


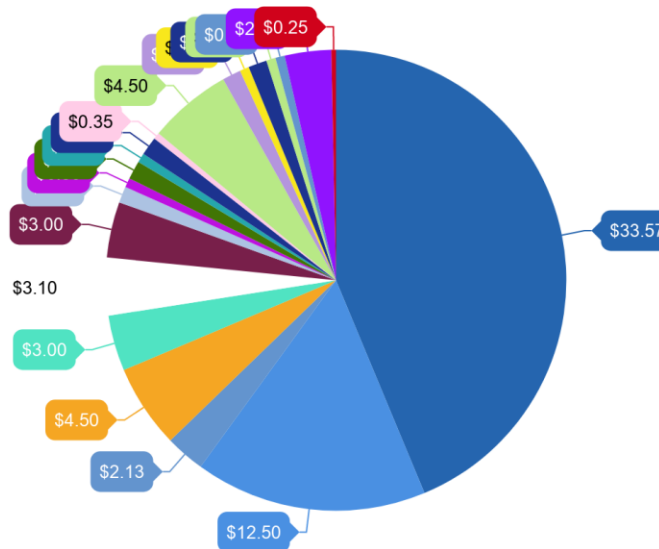
FULL-TIME STUDENT FEE SUMMER BREAKDOWN 2018-2019



- General DSU Operations (46.64%)
- DSU Renovations Fund (16.66%)
- Facility Improvement (2.84%)
- CKDU (6%)
- NSPIRG (4%)
- Gazette (4.13%)
- South House (2.11%)
- Student Accessibility (1.17%)
- DalOut (0.67%)
- Get Real (0.47%)
- Sustainability Office (1.33%)
- South African Trust (0.67%)
- W.U.S.C. (1.33%)
- Loaded Ladle (6%)
- Equity & Accessibility (1.33%)
- Bike Centre (0.67%)
- Campus Medical Resp. (0%)
- Dal Urban Garden Soc. (0%)
- Dal Outdoor Society (0.67%)
- Survivor Support (3.33%)

TOTAL SUMMER FEES: \$75.28

FULL-TIME STUDENT FEE BREAKDOWN FALL & WINTER 2018-2019



- General DSU Operations (43.87%)
- DSU Renovations Fund (16.33%)
- Facility Improvement (2.78%)
- CKDU (5.88%)
- NSPIRG (3.92%)
- Gazette (4.05%)
- South House (3.92%)
- Student Accessibility (1.15%)
- DalOut (0.65%)
- Sustainability Office (1.31%)
- South African Trust (0.65%)
- W.U.S.C. (1.31%)
- Get Real (0.46%)
- Loaded Ladle (5.88%)
- Equity & Accessib.. (1.31%)
- Bike Centre (\$0.50) (0.65%)
- Campus Medical Re.. (1.31%)
- Dal Urban Garden (\$0.50) (0.65%)
- Dal Outdoor Socie.. (0.65%)
- Survivor Support (\$2.50) (3.27%)

TOTAL FEES PER SEMESTER: \$76.78

- General DSU Operations (46.64%)
- DSU Renovations Fund (16.66%)

Student Fee Estimates

Fall 2018

Number of Students:

Full time

Part time

15,559

1,137

	%	Full-Time	Part-Time	%	Full-Time	Part-Time	Total Received
General Operations	46.51%	\$33.57	\$17.83	47.01%	\$522,315.63	\$20,272.71	\$542,588.34
Renovations Fund	17.32%	\$12.50	\$10.00	26.36%	\$194,487.50	\$11,370.00	\$205,857.50
Facility Improvement	2.95%	\$2.13	\$0.50	1.32%	\$33,140.67	\$568.50	\$33,709.17
CKDU	6.23%	\$4.50	\$1.00	2.64%	\$70,015.50	\$1,137.00	\$71,152.50
NSPIRG	4.16%	\$3.00	\$0.50	1.32%	\$46,677.00	\$568.50	\$47,245.50
Gazette	4.29%	\$3.10	\$2.35	6.20%	\$48,232.90	\$2,671.95	\$50,904.85
South House	4.16%	\$3.00	\$1.50	3.95%	\$46,677.00	\$1,705.50	\$48,382.50
Student Accessibility	1.22%	\$0.88	\$0.50	1.32%	\$13,691.92	\$568.50	\$14,260.42
DalOut	0.69%	\$0.50	\$0.25	0.66%	\$7,779.50	\$284.25	\$8,063.75
Sustainability Office	1.39%	\$1.00	\$-	0.00%	\$15,559.00	\$-	\$15,559.00
South African Trust	0.69%	\$0.50	\$-	0.00%	\$7,779.50	\$-	\$7,779.50
W.U.S.C.	1.04%	\$1.00	\$-	0.00%	\$15,559.00	\$-	\$15,559.00
Sextant	0.35%	\$0.25	\$0.25	0.66%	\$3,889.75	\$284.25	\$4,174.00
Get Real		\$0.35	\$0.25		\$5,445.65	\$284.25	\$5,729.90
Loaded Ladle	4.16%	\$4.50	\$2.50	6.59%	\$70,015.50	\$2,842.50	\$72,858.00
Equity & Accessibility	1.39%	\$1.00	\$0.50	1.32%	\$15,559.00	\$568.50	\$16,127.50
Bike Centre	0.69%	\$0.50	\$-	0.00%	\$7,779.50	\$-	\$7,779.50
Campus Medical Resp.	1.39%	\$1.00	\$-	0.00%	\$15,559.00	\$-	\$15,559.00
Dal Urban Garden Soc.	0.69%	\$0.50	\$-	0.00%	\$7,779.50	\$-	\$7,779.50
Dal Outdoor Society	0.69%	\$0.50	\$0.25	0.66%	\$7,779.50	\$284.25	\$8,063.75
Survivor Support	3.23%	\$2.50	\$1.50	3.73%	\$38,897.50	\$1,705.50	\$40,603.00
TOTAL	1	\$76.78	\$39.68	1	\$1,194,620.02	\$45,116.16	\$1,239,736.18

Student Fee Estimates

Winter 2019

Full time

Part time

13,616

1,150

	%	FT	PT	%	Full-Time	Part-Time	Total Received
General DSU Operations	46.51%	\$33.57	\$17.83	47.01%	\$457,089.12	\$20,504.50	\$477,593.62
DSU Renovations Fund	17.32%	\$12.50	\$10.00	26.36%	\$170,200.00	\$11,500.00	\$181,700.00
Facility Improvement	2.95%	\$2.13	\$0.50	1.32%	\$29,002.08	\$575.00	\$29,577.08
CKDU	6.23%	\$4.50	\$1.00	2.64%	\$61,272.00	\$1,150.00	\$62,422.00
NSPIRG	4.16%	\$3.00	\$0.50	1.32%	\$40,848.00	\$575.00	\$41,423.00
Gazette	4.29%	\$3.10	\$2.35	6.20%	\$42,209.60	\$2,702.50	\$44,912.10
South House	4.16%	\$3.00	\$1.50	3.95%	\$40,848.00	\$1,725.00	\$42,573.00
Student Accessibility	1.22%	\$0.88	\$0.50	1.32%	\$11,982.08	\$575.00	\$12,557.08
DalOut	0.69%	\$0.50	\$0.25	0.66%	\$6,808.00	\$287.50	\$7,095.50
Sustainability Office	1.39%	\$1.00	\$-	0.00%	\$13,616.00	\$-	\$13,616.00
South African Trust	0.69%	\$0.50	\$-	0.00%	\$6,808.00	\$-	\$6,808.00
W.U.S.C.	1.04%	\$1.00	\$-	0.00%	\$13,616.00	\$-	\$13,616.00
Get Real		\$0.35	\$0.25		\$4,765.60	\$287.50	\$5,053.10
Sextant	0.35%	\$0.25	\$0.25	0.66%	\$3,404.00	\$287.50	\$3,691.50
Loaded Ladle	4.16%	\$4.50	\$2.50	6.59%	\$61,272.00	\$2,875.00	\$64,147.00
Equity & Accessibility	1.39%	\$1.00	\$0.50	1.32%	\$13,616.00	\$575.00	\$14,191.00
Bike Centre	0.69%	\$0.50	\$-	0.00%	\$6,808.00	\$-	\$6,808.00
Campus Medical Resp.	1.39%	\$1.00	\$-	0.00%	\$13,616.00	\$-	\$13,616.00
Dal Urban Garden Soc.	0.69%	\$0.50	\$-	0.00%	\$6,808.00	\$-	\$6,808.00
Dal Outdoor Society	0.69%	\$0.50	\$0.25	0.66%	\$6,808.00	\$287.50	\$7,095.50
Survivor support	3.23%	\$2.50	\$1.50	373.00%	\$34,040.00	\$1,725.00	\$35,765.00
TOTAL	1	\$76.78	\$39.68	1	\$1,045,436.48	\$45,632.00	\$1,091,068.48

Student Fee Estimates

Summer 2018

Full time 3,176 Part time 2,961

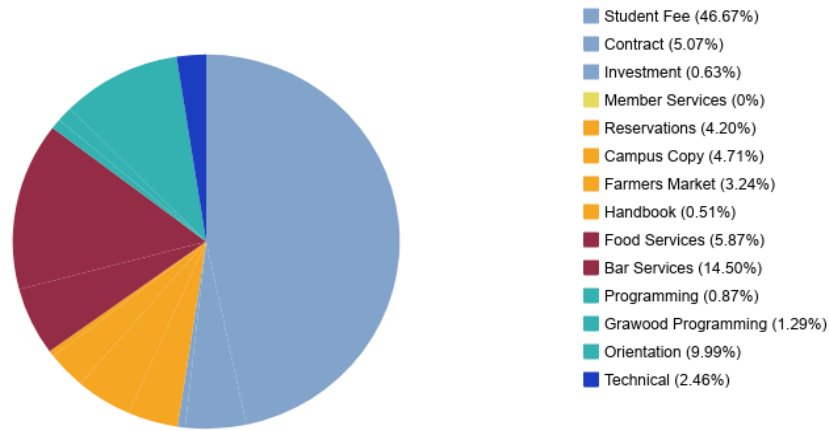
	%	FT	PT	%	Full-Time	Part-Time	Total Received
General DSU Operations	49.34%	\$35.00	\$17.83	47.01%	\$111,160.00	\$52,794.63	\$163,954.63
DSU Renovations Fund	17.62%	\$12.50	\$10.00	26.36%	\$39,700.00	\$29,610.00	\$69,310.00
Facility Improvement	3.00%	\$2.13	\$0.50	1.32%	\$6,749.00	\$1,480.50	\$8,229.50
CKDU	6.34%	\$4.50	\$1.00	2.64%	\$14,292.00	\$2,961.00	\$17,253.00
NSPIRG	4.23%	\$3.00	\$0.50	1.32%	\$9,528.00	\$1,480.50	\$11,008.50
Gazette	4.37%	\$3.10	\$2.35	6.20%	\$9,845.60	\$6,958.35	\$16,803.95
South House	2.22%	\$1.58	\$1.50	3.95%	\$5,002.20	\$4,441.50	\$9,443.70
Student Accessibility	1.24%	\$0.88	\$0.50	1.32%	\$2,794.88	\$1,480.50	\$4,275.38
DalOut	0.70%	\$0.50	\$0.25	0.66%	\$1,588.00	\$740.25	\$2,328.25
Get Real	0.46%	\$0.35	\$0.25	0.63%	\$1,111.60	\$740.25	\$1,851.85
Sustainability Office	1.41%	\$1.00	\$-	0.00%	\$3,176.00	\$-	\$3,176.00
South African Trust	0.70%	\$0.50	\$-	0.00%	\$1,588.00	\$-	\$1,588.00
W.U.S.C.	1.41%	\$1.00	\$-	0.00%	\$3,176.00	\$-	\$3,176.00
Sextant	0.35%	\$0.25	\$0.25	0.66%	\$794.00	\$740.25	\$1,534.25
Loaded Ladle	4.23%	\$4.50	\$2.50	6.59%	\$14,292.00	\$7,402.50	\$21,694.50
Equity & Accessibility	1.41%	\$1.00	\$0.50	1.32%	\$3,176.00	\$1,480.50	\$4,656.50
Bike Centre	0.70%	\$0.50	\$-	0.00%	\$1,588.00	\$-	\$1,588.00
Campus Medical Resp.	0.00%	\$-	\$-	0.00%	\$-	\$-	\$-
Dal Urban Garden Soc.	0.00%	\$-	\$-	0.00%	\$-	\$-	\$-
Dal Outdoor Society	0.70%	\$0.50	\$0.25	0.66%	\$1,588.00	\$740.25	\$2,328.25
Survivor Support	3.23%	\$2.50	\$1.50	3.73%	\$7,940.00	\$4,441.50	\$12,381.50
TOTAL	1	\$75.28	\$39.68	1	\$239,089.28	\$117,492.48	\$356,581.76

				Full-Time	Part-Time	
Distance Students				117	1,525	
	%	FT	PT	Full-Time	Part-Time	Total Received
General DSU Operations	100%	\$10.00	\$5.00	\$1,170.00	\$7,625.00	\$8,795.00

Total fees \$2,696,181.42

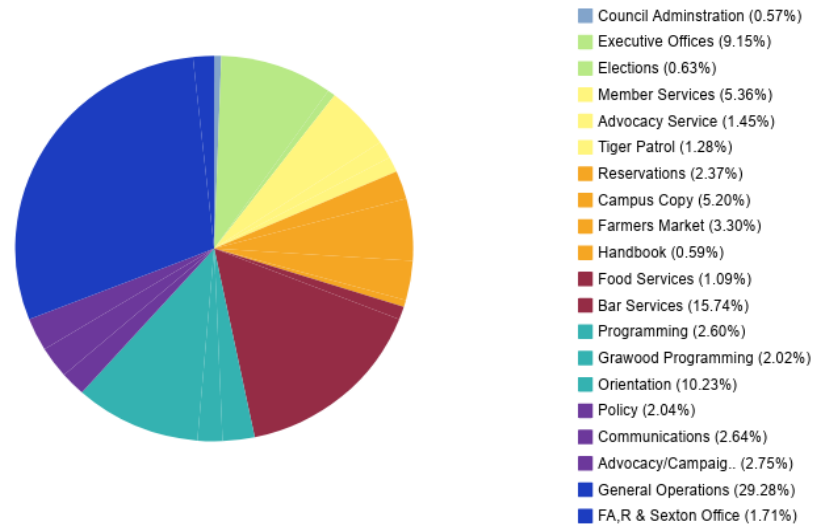
Operations \$1,192,931.59

DALHOUSIE STUDENT UNION REVENUES 2018-2019



TOTAL REVENUE: \$2,556,082.27

DALHOUSIE STUDENT UNION EXPENSE 2018-2019



TOTAL EXPENSE: \$2,547,336.55

TOTAL SURPLUS: \$8,745.72